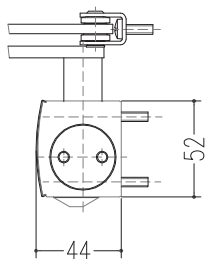


MODELLO GEZE TS 1000 \_ braccio a compasso

per porte  
REI 45

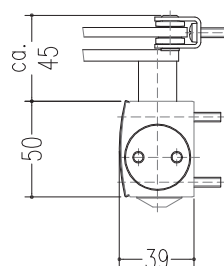
**1 Battente**



MODELLO GEZE TS 1500 \_ braccio a compasso

per porte  
REI 45  
e REI 60  
linea hotel

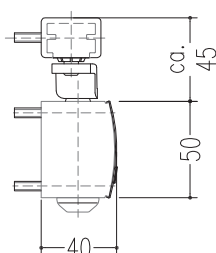
**1 Battente**



MODELLO GEZE TS 1500 \_ braccio a slitta

per porte  
REI 45  
e REI 60  
linea hotel

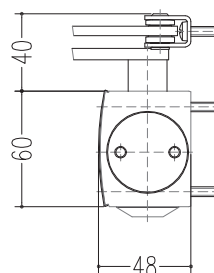
**1 Battente**



MODELLO GEZE TS 2000 \_ braccio a compasso  
(anche con braccio a slitta)

per porte  
REI 60  
e REI 120

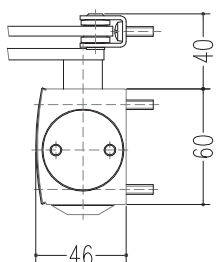
**1 Battente**



MODELLO GEZE TS 4000 \_ braccio a compasso  
(anche con braccio a slitta)

per porte  
REI 60  
e REI 120

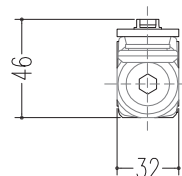
**1 Battente**



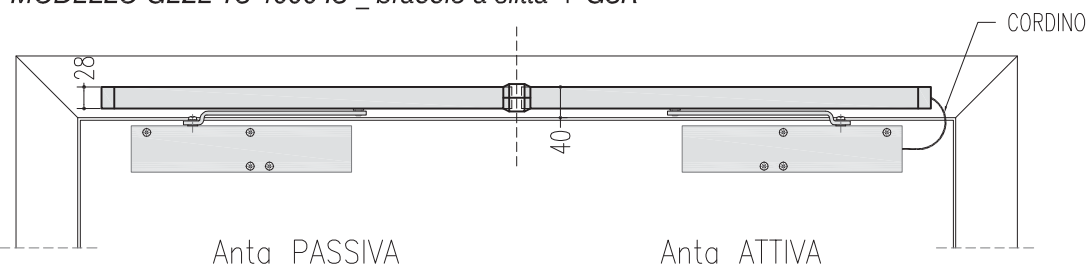
MODELLO GEZE BOXER / DORMA TS 96  
(chiudiporta incassato per porte con anta a filo)

per porte  
REI 30  
e REI 60

**1 Battente**



MODELLO GEZE TS 4000 IS \_ braccio a slitta + GSR



Anta PASSIVA  
per porte asimmetriche  
larghezza minima 300 mm

per porte  
REI 60  
e REI 120

**2 Battenti**